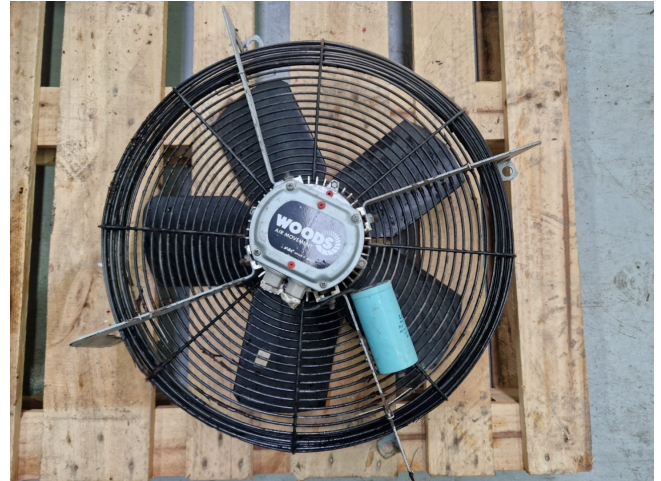


## Woods 209533/55E

### Specifications

Brand	Woods
Type	209533/55E
Diameter Ø (mm)	500
Power (kW)	0,52
Speed (RPM)	1360
Size & Weight	680x680x250 mm (LxWxH)



### Description

#### Used Woods 209533/55E

Used Woods 209533/55E fan with the following specifications: 50 Hz - 0,52 kW - 1360 RPM - diameter 500 mm. Dimensions: 680x680x250 mm (LxWxH).

